

PART OF THE EAST 1/2, SEC. 10, T.6N., R.1E., S.L.B. & M.
RADFORD HILLS NO. 2B

IN WEBER COUNTY

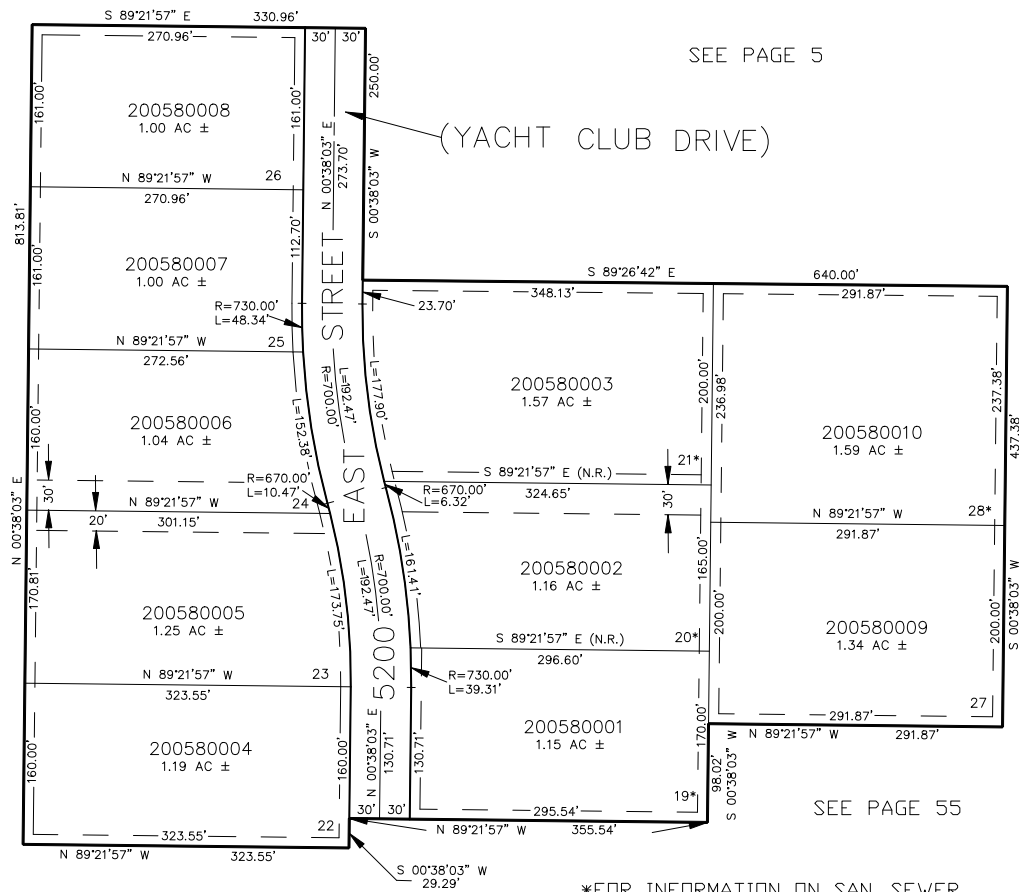
SCALE 1" = 100'

TAXING UNIT: 28

SEE PAGE 5

SEE PAGE 5

SEE PAGE 5



SEE PAGE 55

*FOR INFORMATION ON SAN. SEWER
AND DRAINAGE EASEMENT SEE DED. PLAT

SEE PAGE 57

10' UTILITY & DRAINAGE EASEMENTS EACH
SIDE OF PROPERTY LINES AS INDICATED
BY DASHED LINES EXCEPT AS OTHERWISE
SHOWN.

FOR COMPLETE ENG DATA SEE
ORIGINAL DEDICATION PLAT IN
BOOK 38, PAGE 16 OF RECORDS.